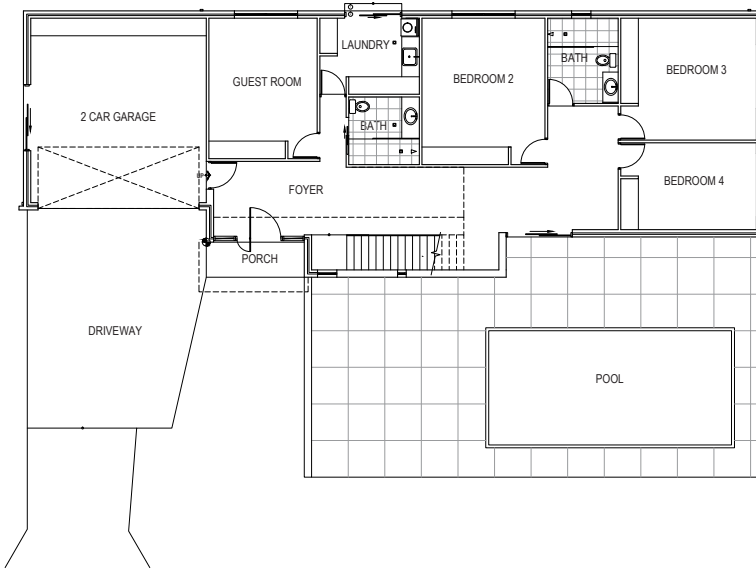




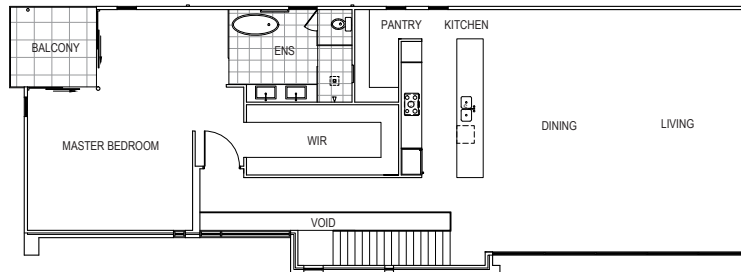
**GALA**  
HOMES

**Lyra**  
TWO STOREY

## Floor plan



GROUND FLOOR



FIRST FLOOR

### GROUND FLOOR

Bedroom 3	4.63m x 4.16m
Bedroom 4	4.72m x 2.97m
Bathroom	3.00m x 2.41m
Bedroom 2	5.00m x 4.29m
Bathroom	2.00m x 2.00m
Laundry	3.00m x 2.40m
Guest Room	3.70m x 4.20m
Entry Foyer	8.55m x 2.51m
Garage	6.00m x 6.30m

### FIRST FLOOR

Dining & Living Room	8.91m x 8.50m
Kitchen	2.80m x 4.74m
Pantry	1.80m x 2.56m
Master Bedroom	7.54m x 5.94m
Master Ensuite	4.21m x 2.56m
Master WIR	5.20m x 2.40m

### EXTERNAL

Porch	1.00m x 3.00m
Balcony	2.96m x 2.75m

## Key features

HOUSE TYPE	BEDS	BATHS	GARAGE	LIVING AREAS	ALFRESCO	WIDTH m	DEPTH m	SIZE m <sup>2</sup>
TWO STOREY	5	3	2	1	1	8.41	23.37	380.00

- 9ft (2700mm) Ceilings
- 8ft (2400mm) high Doors & Windows
- Pivot Entry Door
- Alfresco Stacker Doors
- European Appliances
- Luxury Fixtures & Fittings
- Stone Benchtops
- Custom Joinery with Soft Closing Doors & Draws
- Walk in Pantry
- Robe, Store & Linen Joinery
- Carpet to the Bedrooms
- 600x600 Tiles to the Living Areas & Wet Areas
- 600x600 External Tiles to the Alfresco & Porch
- 6 Star Energy Rating
- T2 Structural Framing

Whilst all details have been carefully prepared and are believed to be correct, no warranty can be given either expressly or implied by the vendors or their agents. Intending purchasers must rely on their own enquiries. Photographs and illustrations are for presentation purposes only and are indicative only. They should not be relied upon as an accurate representation of the final product. Correct at time of print. Specification may change at anytime.