

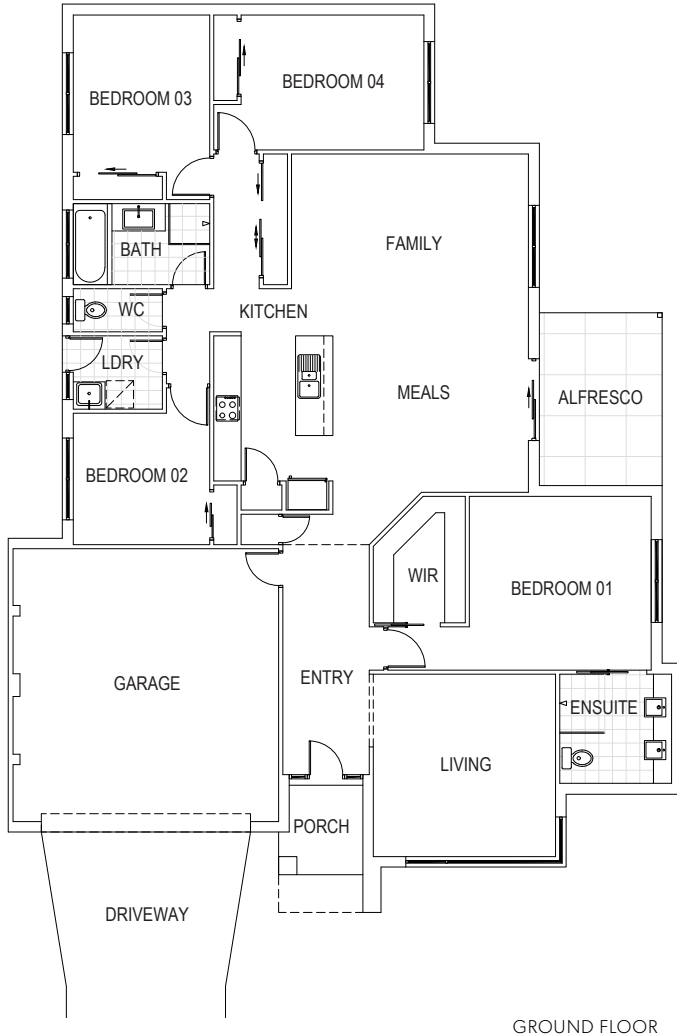


**GALA**  
HOMES

# Apollo

ONE STOREY

## Floor plan



### GROUND FLOOR

|                |               |
|----------------|---------------|
| Living Room    | 4.01m x 4.01m |
| Master Bedroom | 3.82m x 4.00m |
| Master Ensuite | 3.23m x 2.01m |
| Master WIR     | 2.90m x 2.80m |
| Meals          | 3.44m x 4.30m |
| Family         | 4.00m x 5.21m |
| Kitchen        | 3.82m x 2.62m |
| Bedroom 2      | 2.89m x 3.00m |
| Laundry        | 1.61m x 1.96m |
| WC             | 0.95m x 1.96m |
| Bathroom       | 1.78m x 3.00m |
| Bedroom 3      | 3.46m x 3.00m |
| Bedroom 4      | 2.97m x 4.02m |
| Entry Foyer    | 5.73m x 1.90m |
| Garage         | 6.00m x 5.84m |

### EXTERNAL

|          |               |
|----------|---------------|
| Porch    | 1.97m x 1.62m |
| Alfresco | 3.80m x 2.70m |

## Key features

| HOUSE TYPE | BEDS | BATHS | GARAGE | LIVING AREAS | ALFRESCO | WIDTH m | DEPTH m | SIZE m <sup>2</sup> |
|------------|------|-------|--------|--------------|----------|---------|---------|---------------------|
| ONE STOREY | 4    | 2.5   | 2      | 1            | 1        | 14.83   | 19.14   | 227.00              |

- 9ft (2700mm) Ceilings
- 8ft (2400mm) high Doors & Windows
- European Appliances
- Luxury Fixtures & Fittings
- Stone Benchtops
- Custom Joinery with Soft Closing Doors & Draws
- Robe, Store & Linen Joinery
- Carpet to the Bedrooms & Living Room
- 6 Star Energy Rating
- 600x600 Tiles to the Entry, Kitchen, Meals, Family & Wet Areas
- 600x600 External Tiles to the Alfresco & Porch
- T2 Structural Framing

Whilst all details have been carefully prepared and are believed to be correct, no warranty can be given either expressly or implied by the vendors or their agents. Intending purchasers must rely on their own enquiries. Photographs and illustrations are for presentation purposes only and are indicative only. They should not be relied upon as an accurate representation of the final product. Correct at time of print. Specification may change at anytime.